



Measured Survey
PRO

SAMPLES OF DRAWINGS

Contact:

Tel: +44 (0) 203 538 8176

Tel: +44 (0) 739 901 1771

E-mail: hello@measuredsurveypro.co.uk

Website: measuredsurvey365.co.uk



Measured Survey
PRO



KEY FACTS ABOUT US

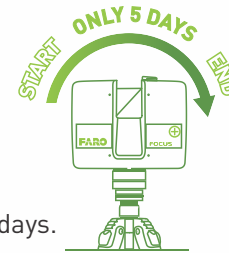
INDUSTRY LEADING TECHNOLOGIES

Range of up to 350
Accuracy of $\pm 1\text{mm}$
Ability to survey in limited or no-light conditions
Contactless technology



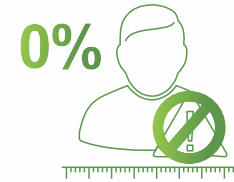
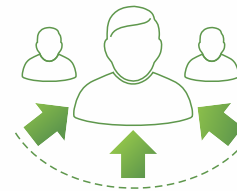
FAST TURNAROUND

Typical turnaround time 5 working days.



SINGLE POINT OF CONTACT

Just one point of contact for each client.



RELIABLE

0% chance in human error



COMPETITIVE PRICES

90% + success rate is providing the most competitive quotation

INDUSTRY LEADING SOFTWARE

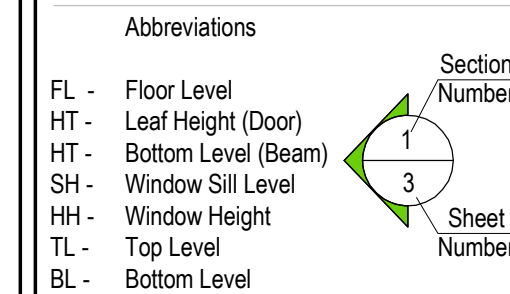
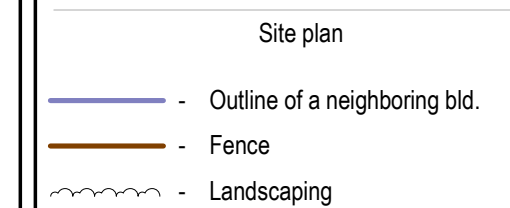
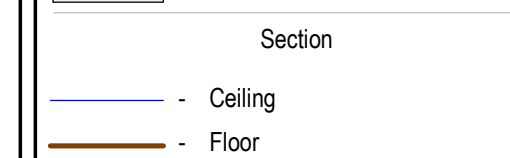
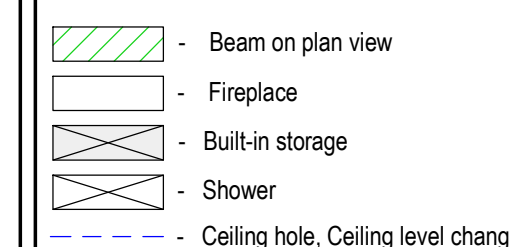
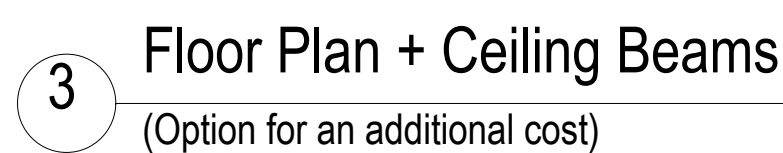
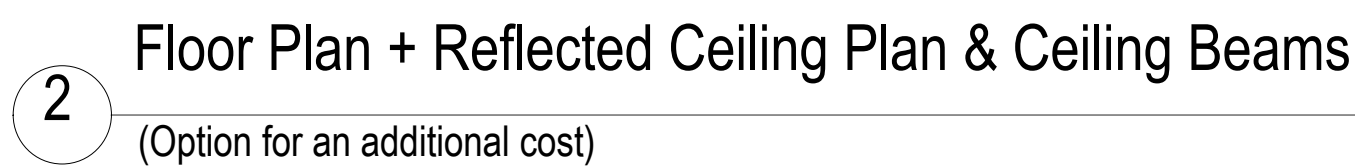
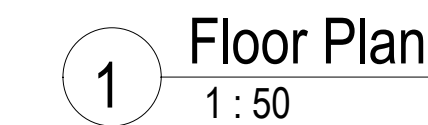
FARO
SCENE

R AUTODESK®
REVIT™

matterport™

A AUTOCAD®

R AUTODESK®
RECAP™ PRO



Notes
In the PDF drawings, the depicted wall colors are solely for illustrative purposes.

Project numberProject address

ID	Description	Status	Priority	Assignee	Due Date	Created At	Updated At
1	Task 1	In Progress	High	John Doe	2023-10-25	2023-10-20	2023-10-24
2	Task 2	Not Started	Medium	Jane Smith	2023-10-26	2023-10-21	2023-10-25
3	Task 3	Completed	Low	John Doe	2023-10-27	2023-10-22	2023-10-26
4	Task 4	In Progress	High	Jane Smith	2023-10-28	2023-10-23	2023-10-27
5	Task 5	Not Started	Medium	John Doe	2023-10-29	2023-10-24	2023-10-28

Samples of Drawings	
Drawn	Checked

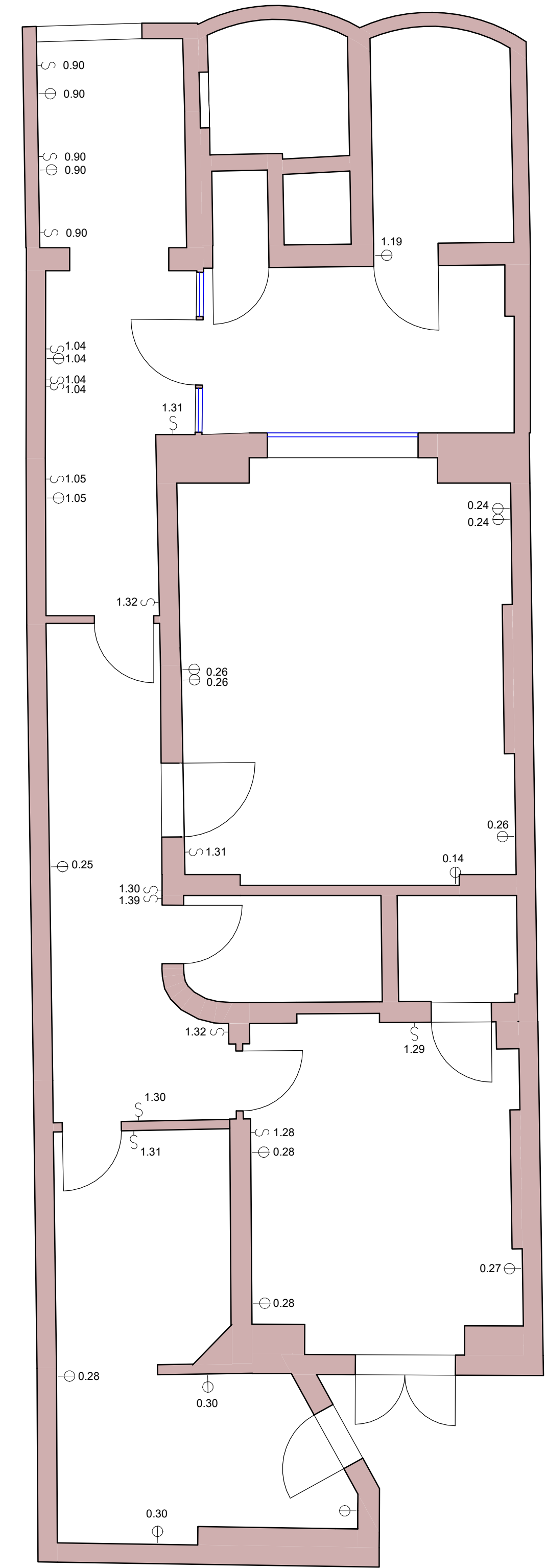
SK CP

Scale bar

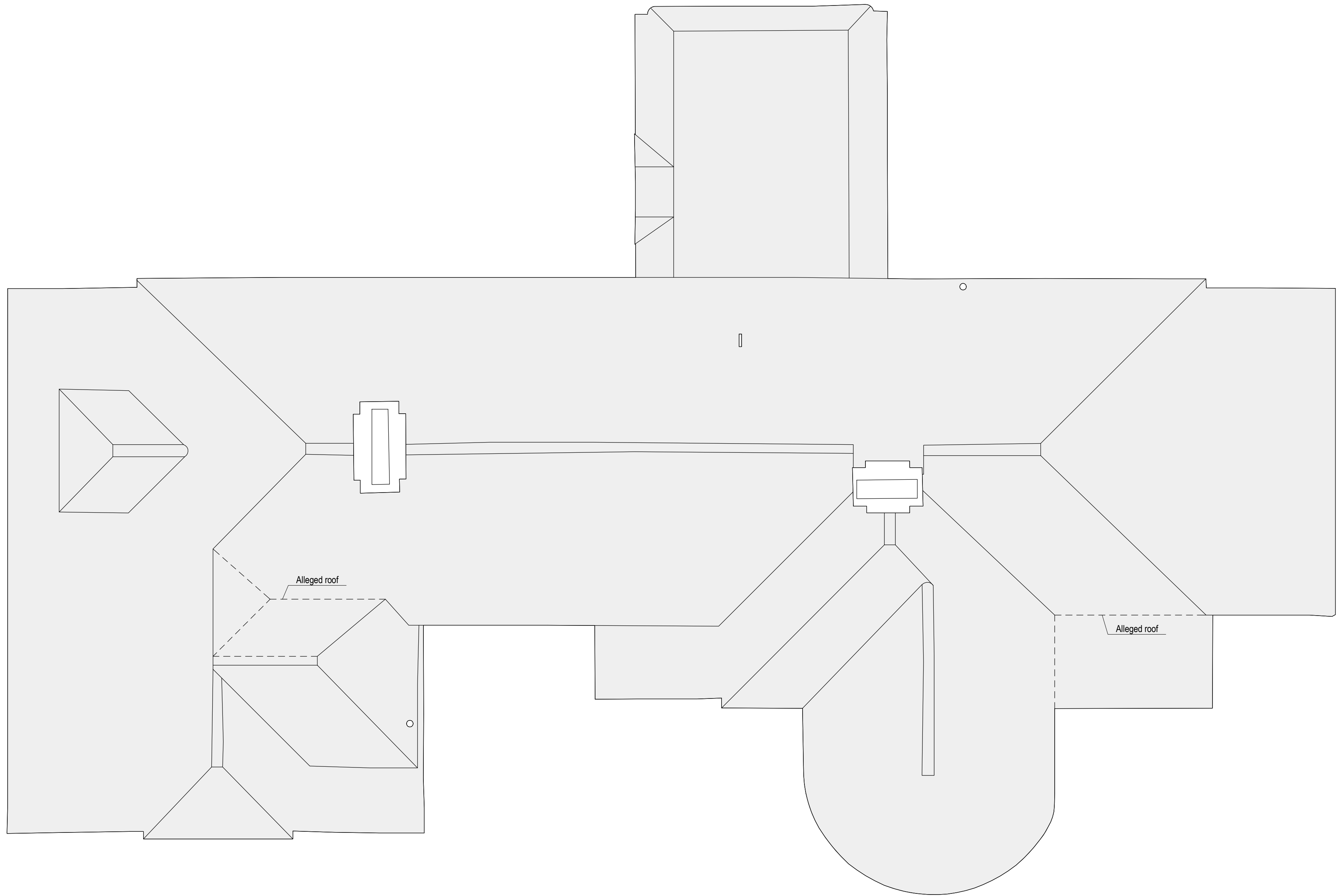
Scale _____ Format _____ Sheet No _____

1:50	A1	1
------	----	---

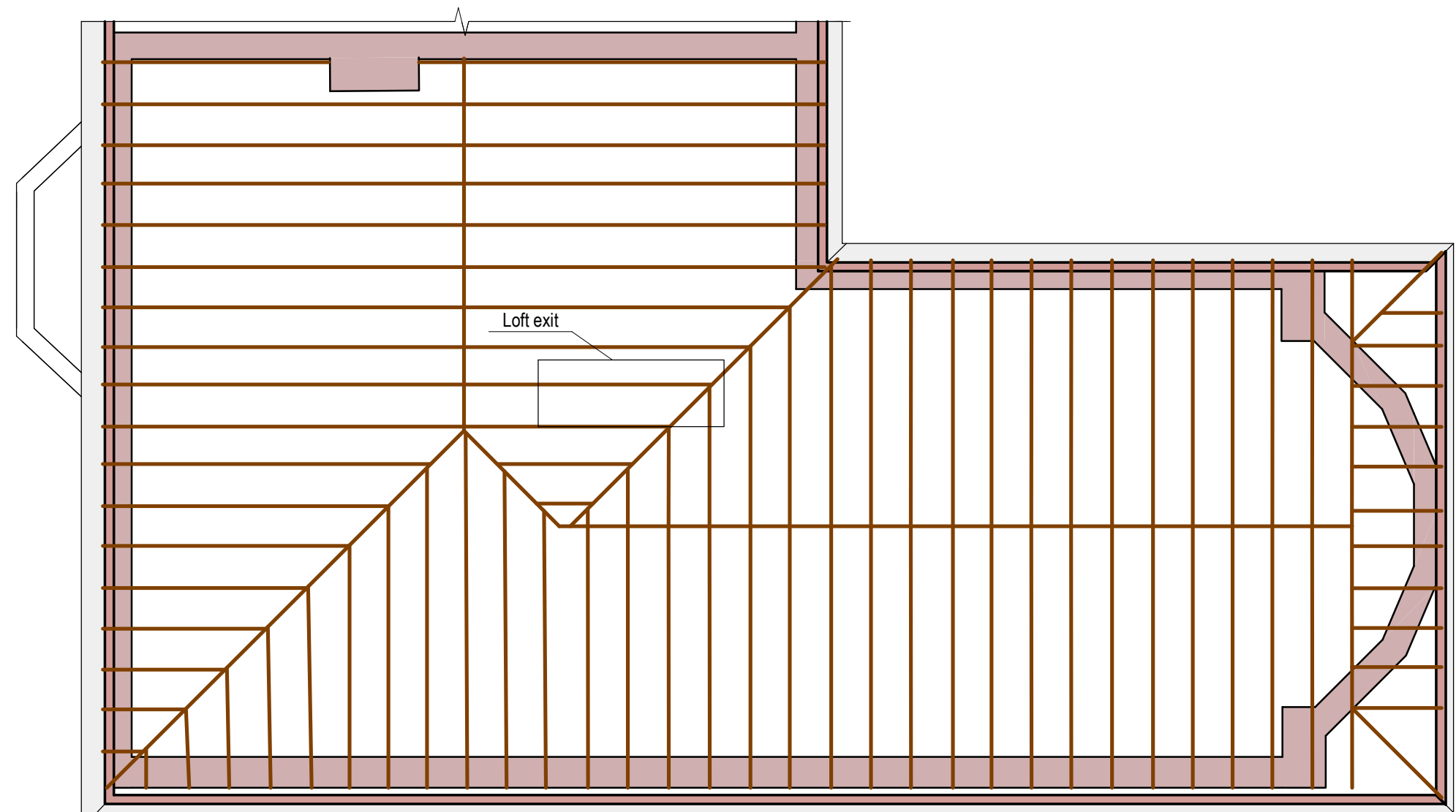




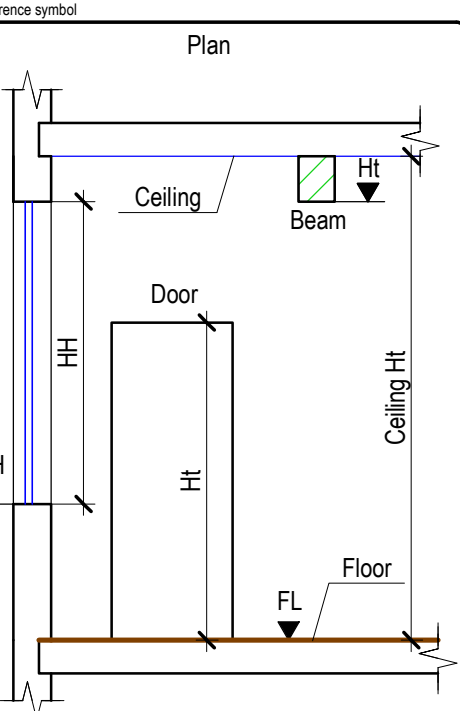
1 Floor Plan + Switches & Sockets
(Option for an additional cost)



1 Roof Plan
(Option for an additional cost)



1 Loft Plan
(Option for an additional cost)



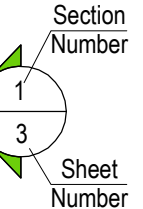
- Beam on plan view
- Fireplace
- Built-in storage
- Shower
- Ceiling hole, Ceiling level change

- Elevation
- Roof

- Section
- Ceiling
 - Floor

- Site plan
- Outline of a neighboring bld.
 - Fence
 - Landscaping

- Abbreviations
- FL - Floor Level
 - HT - Leaf Height (Door)
 - HT - Bottom Level (Beam)
 - SH - Window Sill Level
 - HH - Window Height
 - TL - Top Level
 - BL - Bottom Level



Notes:
In the PDF drawings, the depicted wall colors are solely for illustrative purposes.

Project number

Project address

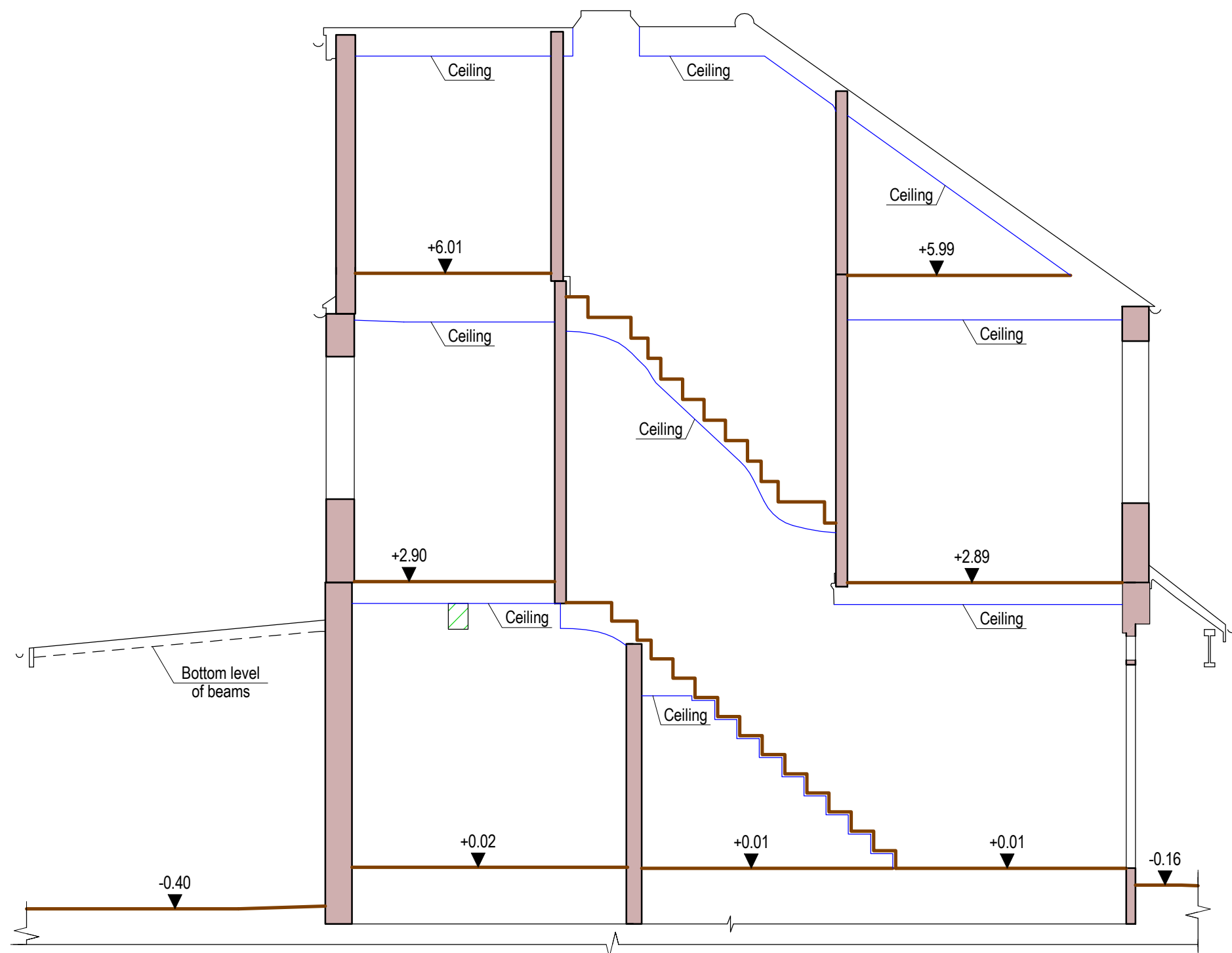
Description

Samples of Drawings

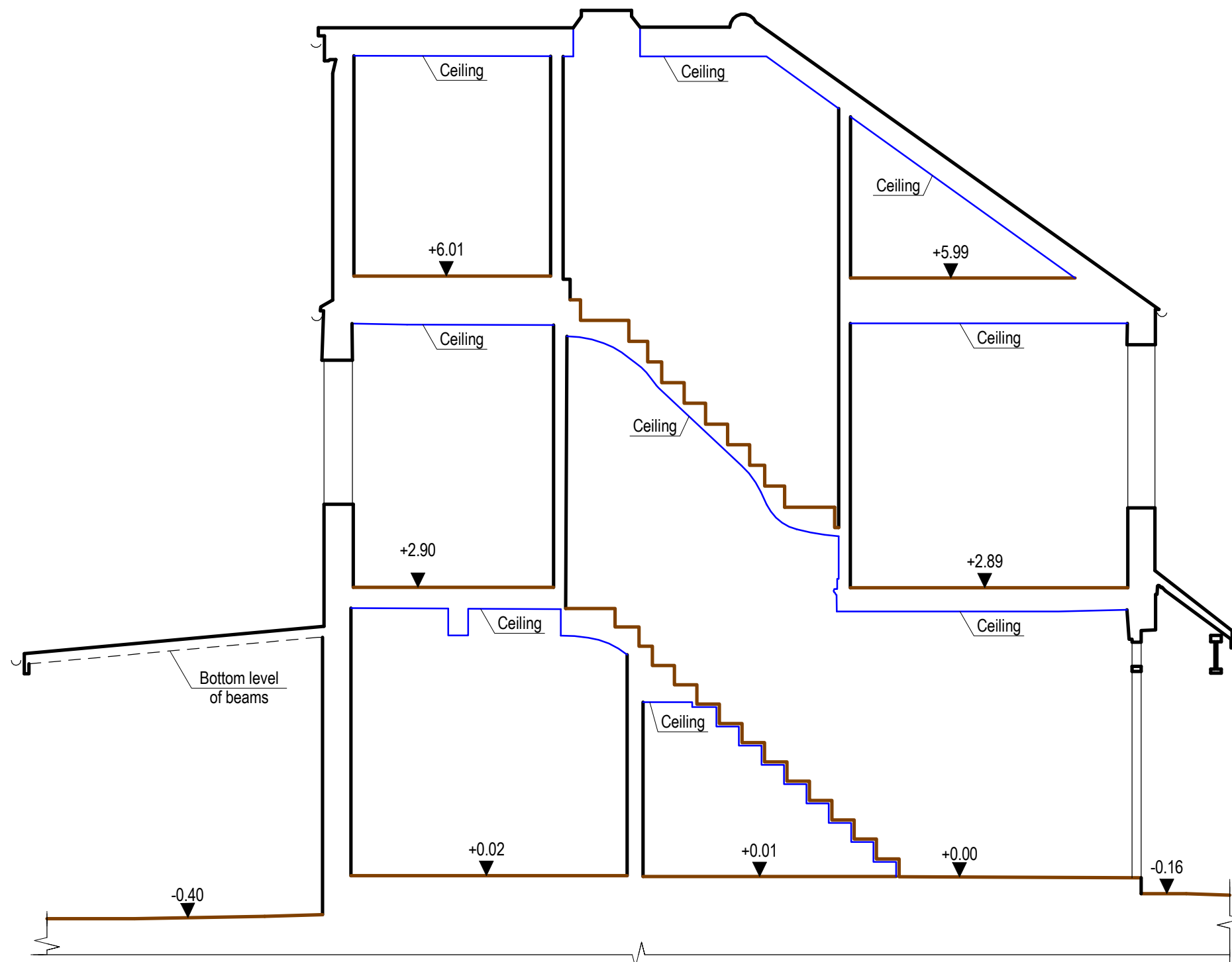
Drawn SK Checked CP

Scale bar

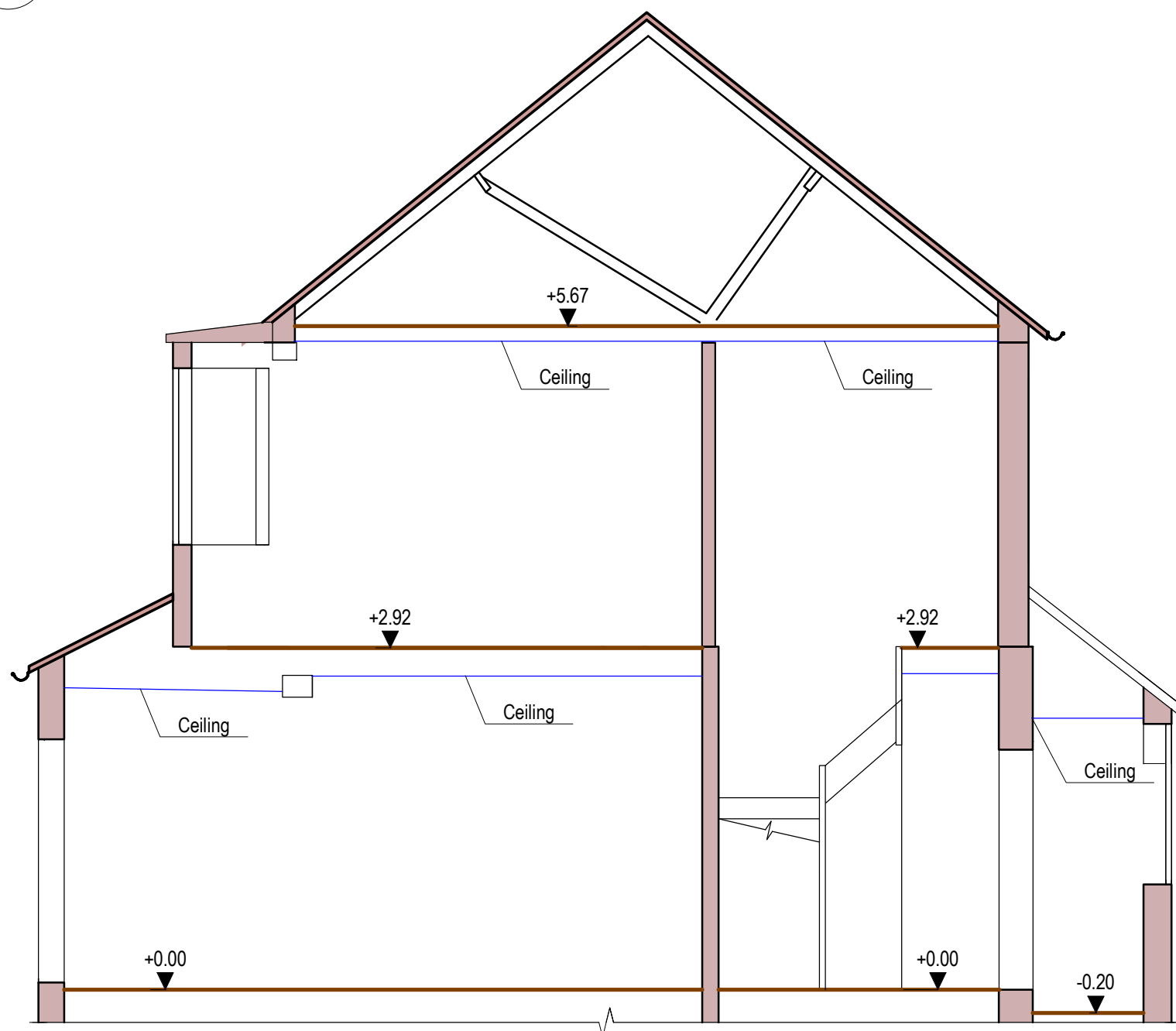
Scale 1:50 Format A1 Sheet No 2



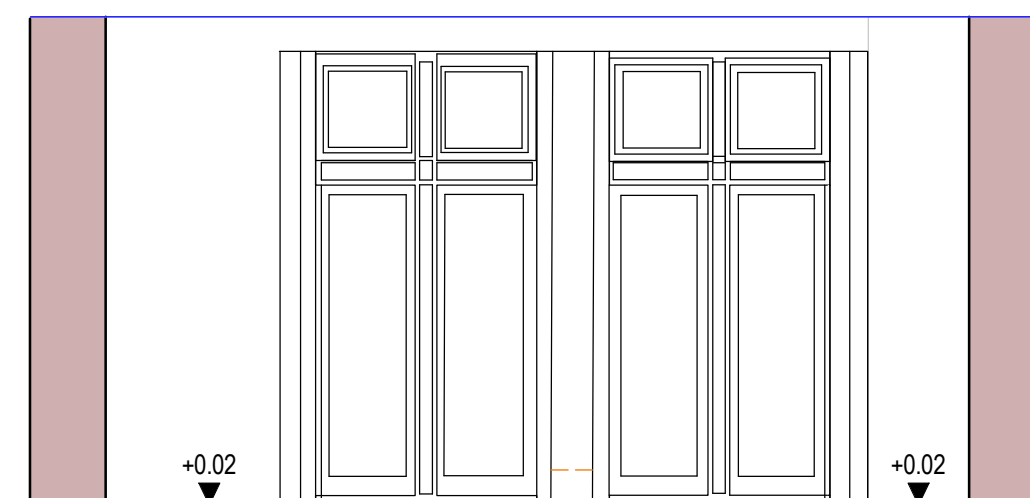
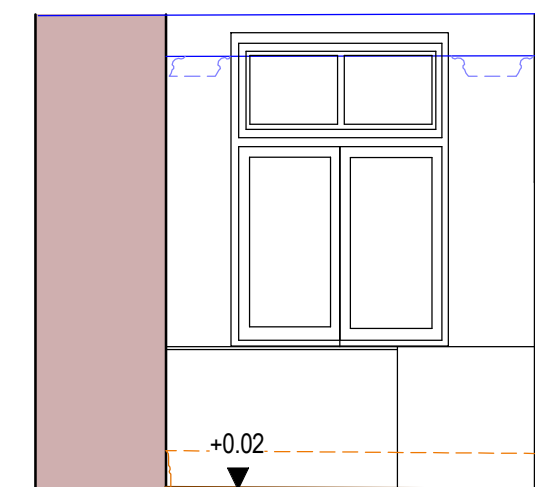
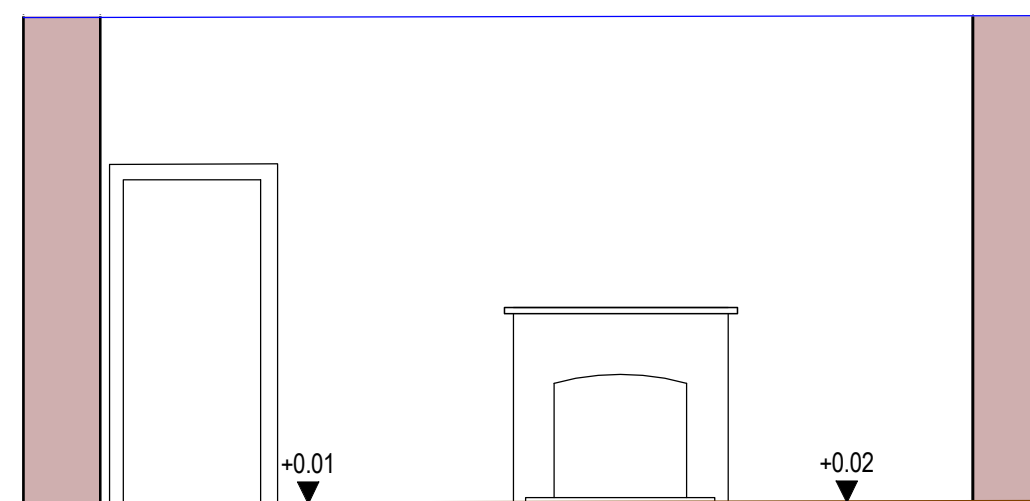
1 Section Drawing Type 1



2 Section Drawing Type 2
(Option for an additional cost)



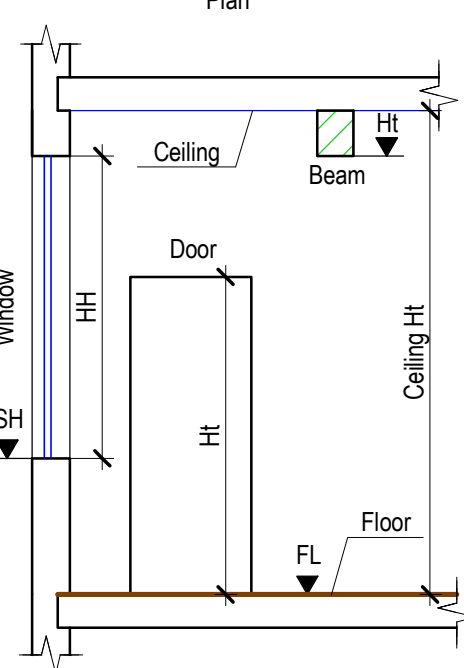
3 Section Drawing Type 1
(Loft space not included, unless a loft survey was included into SOW's)



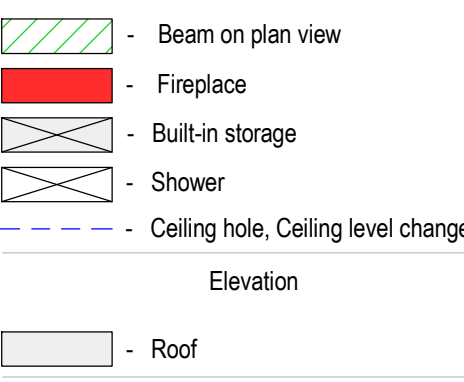
4 Internal Elevation Drawing
(Option for an additional cost)

Reference symbol


Plan




Elevation



Section



Site plan



Abbreviations

FL - Floor Level
HT - Leaf Height (Door)
HT - Bottom Level (Beam)
SH - Window Sill Level
HH - Window Height
TL - Top Level
BL - Bottom Level

Notes

In the PDF drawings, the depicted wall colors are solely for illustrative purposes.

Project number

Project address

Description

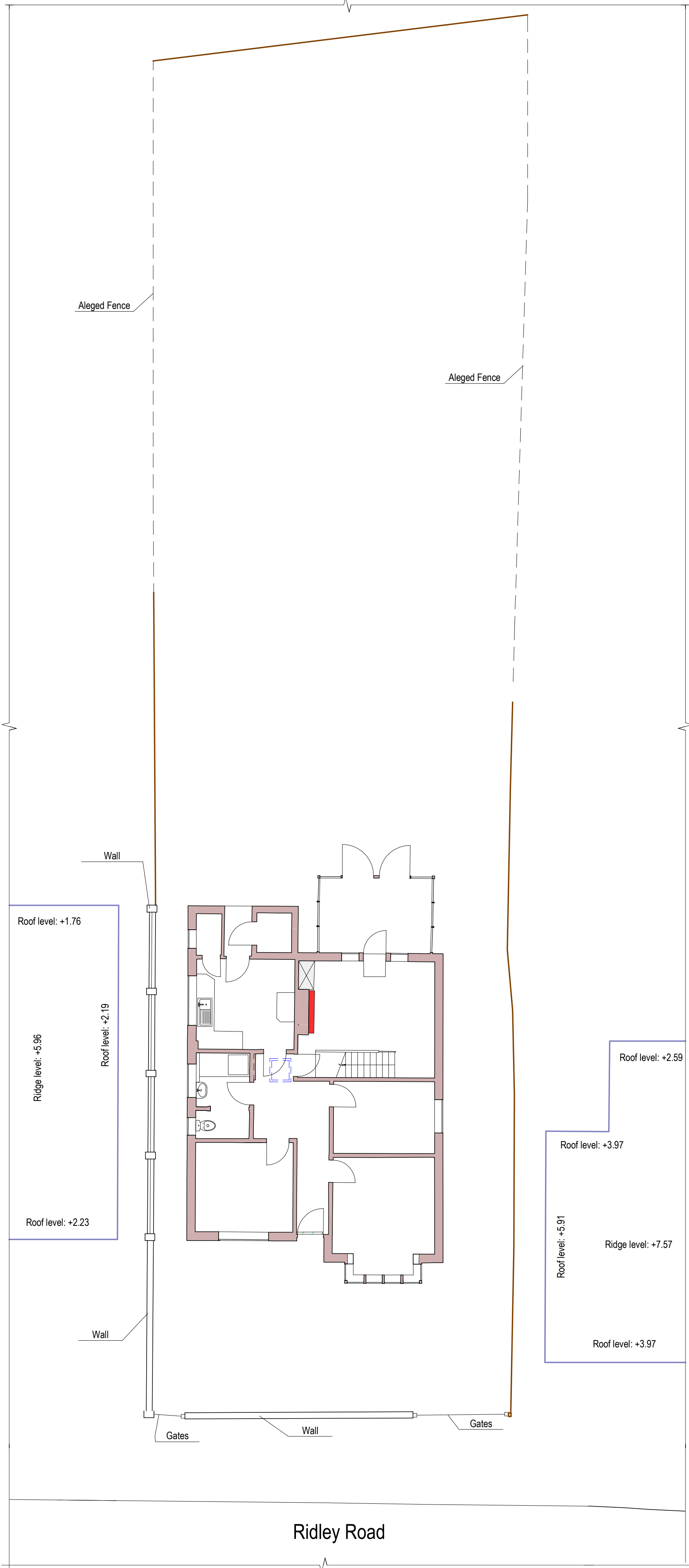
Samples of Drawings

Drawn S K Checked C P

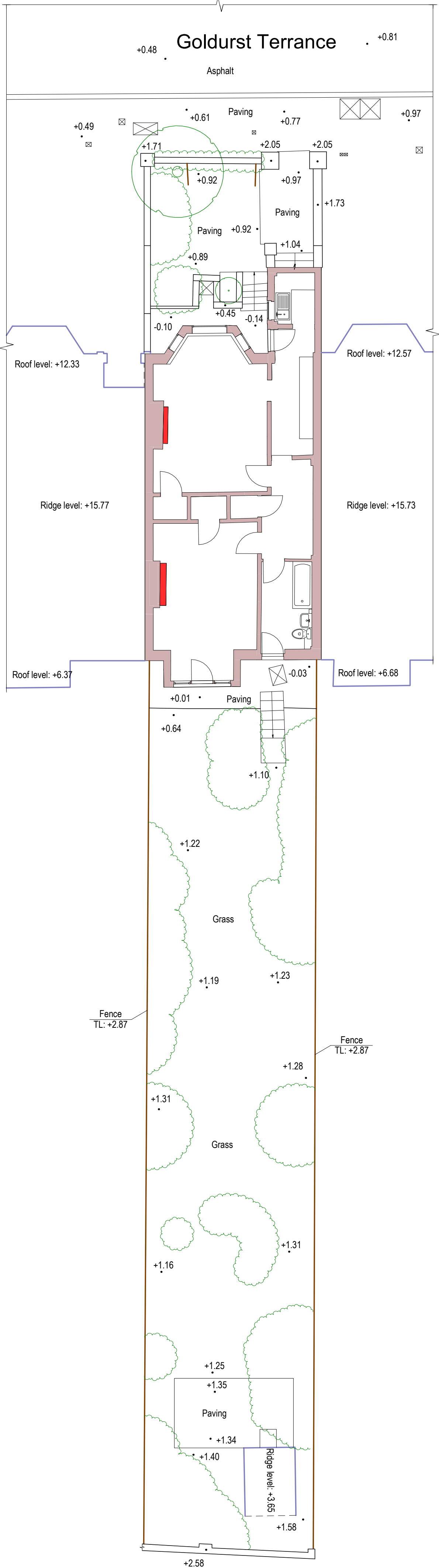
Scale bar

Scale 1:50 Format A2 Sheet No 3

Site Plan Option №1



Site Plan Option №3 (Standard)



Measured Survey
PRO

+44 (0) 203 538 8176
+44 (0) 739 901 1771
hello@measuredsurveypro.co.uk
https://measuredsurvey365.co.uk

Reference symbol

Plan

Window

SH

HT

HH

Door

HT

Beam

HT

Ceiling

Beam

HT

Floor

FL

Legend

- Beam on plan view
- Fireplace
- Built-in storage
- Shower
- Ceiling hole, Ceiling level change

Elevation

- Roof

Section

- Ceiling
- Floor

Site plan

- Outline of a neighboring bld.
- Fence
- Landscaping

Abbreviations

- FL - Floor Level
- HT - Leaf Height (Door)
- HT - Bottom Level (Beam)
- SH - Window Sill Level
- HH - Window Height
- TL - Top Level
- BL - Bottom Level

Section Number

1

3

Sheet Number

Notes

In the PDF drawings, the depicted wall colors are solely for illustrative purposes.

Project number

Project address

Description

site plans

Drawn

SK

Checked

CP

Scale bar

Scale

1:50

Format

A1

Sheet No

5

CAD Drawings Specification

1. The orientation of the building in the plan is chosen arbitrarily (but parallel to the X or Y axes), unless otherwise agreed with the customer.

2. The quantity and types of drawings will be produced as specified in the quotation.

3. The points for the door, window, roof and other element measurements are chosen by the technician (unless otherwise agreed prior to the survey and the agreed points are specified by MSP in their quotation).

4. Room modelling

- Walls are traced over the point cloud which is cut at a height of 1500mm from above the floor. This distance may vary in order to show inaccessible places (for example, walls behind cabinets). Conventionally, it is assumed that within the floor, vertically all walls are even. Therefore, at the junction of the floors, "stepping" may occur. On the plans, the outer edges of the walls are shown in minimal detail without finishings.
- All floor plans include walls, windows and doors.
- Bathrooms include the following: showers, toilets, sinks and baths. Dimensions are outlined for illustrations of their positions only and may differ from actual sizes.
- Only ceiling openings and windows in the roof are shown on a standard floor plan. Changes to ceiling levels are not shown (this is a separate option for a fee).
 - If there is roughly one ceiling level in the room, the average height is set.
 - If there are 2 or more ceiling levels, the height is set to the lower ceiling.
 - Local ceiling changes in small areas or beams are not considered.
- Sloped ceilings:
 - If there is a flat part - the height is set to the flat part.
 - If the lowest point is higher than 2000mm – then the height is set to the lowest point.
 - If the lowest point is 2000mm and below, then the height is set up to the highest point.
- All doors and windows are shown as a single standard family. Only the width and height of the doors and windows are measured.
- Windows are marked at the top of the window sill and the heights of the window are shown to the bottom of the window jumper. If the window jumper is not clearly visible, the top level of the window will be set by the drafter. All window dimensions should therefore be verified on site before carrying out any works related to windows. The window frame dimensions are conditional. Window dimensions are taken from the facade only in cases where the dimensions cannot be taken from the inside.
- For doors, the height of the door opening is shown from the floor of the room (when there is a low threshold) or from the threshold (when there is a high threshold) to the top of the door leaf. The door pattern is only shown for exterior doors.
- Floors and ceilings are modelled flat at an average floor and ceiling level of each room. The floor and ceiling are modeled without thickness and reflect only the position in space.
- Floor plans also show room names, the floor height mark, the height of the ceiling from the floor. Where there are different floor mark heights within one room, the average value is taken.
- Roof systems are not shown in the standard package of drawings.

4.1 Standart Package - Mid-level tolerance - model data constructed to an average tolerance of 10-15 mm of the point cloud with a maximum tolerance of 30mm.

- The walls are accurately placed at the corners of the room and corrected at intermediate points only if the discrepancy with the cloud exceeds the tolerance. Local changes in wall shapes that are not affecting the full height of the wall are not shown. Minor wall rounding are not shown.
- External walls from one floor can be copied to the next floor and not corrected if the discrepancy with the cloud is not exceeding the tolerance for this package.
- All plumbing elements are conditional as they are not adjusted in size or shape (countertops, cabinets, etc. are not shown).
- No built-in storage units are shown except for the countertops in the kitchen.
- The staircase is created using a default symbol and has conditional dimensions.
- The floor plan will have limited level of detail included (walls not full height, ceiling hatches and minor wall voids are not shown)

4.2 Advanced Package - High-level tolerance - model data constructed to an average tolerance of 10 mm of the point cloud with a maximum tolerance of 15mm.

- Kitchens include the following: Countertops, built-in storages and sinks. Dimensions are outlined for illustrations of their positions only and may differ from actual sizes.
- All rooms - Floor plans show built-in storage that are above 1500mm in height. Dimensions are outlined for illustrations of their positions only and may differ from actual sizes.
- Only the position of the wall in space and its thickness are shown (provided that the wall was scanned from both sides). Interior windows are considered to be walls with transparent infill and are not shown on the floor plans (unless otherwise agreed with the client).
- All ledges and niches falling into the section are shown.
- Provided that the size of the walls within 1 room is less than 15 mm difference, the walls are set straight taking their average position.

5.Elevations

- Elevations are built only within the limits of scanned rooms. Windows and doors on the facades are built according to the parameters of internal measurements, unless internal measurements are not available. Measured parameters: bottom mark, height, width.
- All pipes are shown with a diameter of more than 30 mm. Gutters on the eaves of the roof are shown conditionally. Taps are not shown.
- All architectural elements of the facades are shown conditionally and in minimal detail.
- If some elements of the facade are not visible from the ground and therefore were not scanned, then the facade is constructed conditionally.
- Roof tops and bottoms are fixed. Uneven surfaces on roofs are not shown.

CAD Drawings Specification

5.1 Standart Package - Mid-level tolerance - model data constructed to an average tolerance of 10-15 mm of the point cloud with a maximum tolerance of 30mm.

- The walls are set to the same position as per the floor plan, unless their deviation with the point cloud exceeds the tolerance. The dimensions of the windows are taken from the floor plan and are not set according to the dimensions of the window on the elevation, unless the deviation exceeds the tolerance. The thickness of the outer frame is conditional and is not measured. The number of glass compartments is shown conditionally without measuring the thickness. Windows are drawn in minimal detail. Doors are shown according to their dimensions of the floor plan without showing any detailing. Gutters are shown conditionally, the height is fixed only at the beginning and at the end of the gutter. Drainpipes are shown conditionally, without rounding. Trim and molding elements are shown in simplified detail for visual purposes only. If the finishing elements are visually similar, they are copied without maintaining accuracy tolerances. The pipes are only shown in the main elevation projection; secondary projections do not display pipes if they are more than 1 meter away from the facade plane.

5.2 Advanced Package - High-level tolerance - model data constructed to an average tolerance of 10 mm of the point cloud with a maximum tolerance of 15mm.

- The elevation is created from the point cloud data with a high-level tolerance and includes more detail than the Standard Package.

6. Section drawings

- If the property has a staircase, then one section drawing will always go through the staircase, unless otherwise agreed.
- The position of the remaining sections is arbitrary (unless otherwise agreed).
- Standard section drawings are created from floor plans produced. Conventionally, it is assumed that within the floor, vertically all walls are even. Therefore, at the junction of the floors, "stepping" may occur. Floor and ceiling level values on section drawings are taken from the floor plans.
- Standard section drawings are up to 100mm in depth
- The areas included in the section drawing is as per the areas of the internal floor plans included in the quotation.

6.1 Standart Package - Mid-level tolerance - model data constructed to an average tolerance of 10-15 mm of the point cloud with a maximum tolerance of 30mm.

6.2 Advanced Package - High-level tolerance - model data constructed to an average tolerance of 10 mm of the point cloud with a maximum tolerance of 15mm.

7.Site plan.

- We offer 3 types of site plans:
- Option 1 - Only a fence line showing the boundary of the territory without elevations.
- Option 2 - Site plan "without levels". The fence is shown in one line indicating the height of the fence. All coverings with borders between them are shown, gates, trees, bushes, hatches, pavements and flowerbeds are shown. All buildings in the territory are also shown with an indication of their heights.
- Option 3 - Site plan with levels. Same as above but tree and land levels are also included. Trees (Option 2& 3) - an approximate height spot is shown, which is relative to the 0 level datum spot established on-site. The size and location of the tree trunks are approximate.
- Only trees standing separately are shown. A cluster of trees is shown in an outline form only.
- A site plan covers external areas only and does not include an internal floor plan of the building.

7.1 Standart Package - Mid-level tolerance - model data constructed to an average tolerance of 15-20 mm of the point cloud with a maximum tolerance of 50mm.

- A reduced number of spot height marks will be shown. To any width, where there is absence of steps and a visual level change, 3 spot height marks be used.
- The fence is aligned at the corners. Intermediate points are used for aligned the fence only when the deviation of the fence with the cloud is greater than 50mm.
- The heights of the walls are annotated only with a spot height mark (as per the spot height marks for the land levels).
- Fence and tree heights are not shown.
- For neighbouring buildings and the outbuildings on the site, only the height of the ridge or parapet is shown for the visible buildings. Only 1 measurement per 1 neighbour - the highest point of the roof.
- Only trees standing separately are shown. A cluster of trees is shown in an outline form only.
- Curbs up to 50 mm thick are shown as a single line.

7.2 Advanced Package - High-level tolerance - model data constructed to an average tolerance of 15 mm of the point cloud with a maximum tolerance of 25mm.

- The Site plan is created based on the point cloud data with a High-level tolerance and includes more details that are excluded in "Standard Site plan detail level".

8. All information contained in these drawings should be checked and verified prior to any fabrication or construction. Any discrepancies between these drawings and any other information should be reported to Measured Survey Pro Ltd within 60 days after Measured Survey Pro releases the native CAD DWG drawings.

9. All structural element thickness measurements should be verified on-site prior to using them for any structural calculations.

10. Our 'Standard' package adheres to the customary accuracy parameters typically expected in measured building and topographical surveys. Should your project necessitate precision beyond these standard parameters, please request a quote for our 'Advanced' package, designed to meet more stringent accuracy requirements.

Contact:
Tel: +44 (0) 203 538 8176
Tel: +44 (0) 739 901 1771

E-mail: hello@measuredsurveypro.co.uk
Website: measuredsurvey365.co.uk

Terms of Quotation

Payment Terms

A 50% deposit is required before the survey date. An overview screenshot of the drawings will be provided with the final invoice, and the native CAD drawings will be released once the full final payment is received.

Notes:


- The quotation is valid for 7 days.
- Work hours are Monday to Friday, 8am to 6pm, unless agreed upon beforehand. Any other arrangements may result in additional charges.
- Our prices are based on the information provided by the client which will be the minimum billed for. Any significant difference >10% will incur additional survey time which in turn will be charged accordingly on a pro rata basis.
- Assuming free and unrestricted access to the site for the scheduled project program and that there will be a 220V 50 Hz electrical supply available
- Any Drainage access points are for indicative purposes only
- Any electrical supplies, equipment switches, power outlets, and/or distribution or consumer equipment are not included as standard
- Portable or temporary fittings such as furniture, desks, HVAC, water coolers etc. are not included
- Unless otherwise specifically indicated within our Description of Works a full roof survey (including the lofts & areas under the eaves) is not included.
- Full and safe access to the roof/loft spaces is to be provided by the client. We do not bring ladders to the surveys.

Cancellations - Once a survey date has been booked, a slot will be scheduled in for the works to be carried out and this will be held for the customer, if the survey is cancelled or re-scheduled within 72 working hours of the survey time/date, there will be a cancellation fee of £500.00 + VAT plus all reasonable expenses that will be applicable.

Access Delays – Unless previously agreed over email or in writing, any access delays on site due to no fault of Measured Survey Pro Ltd will incur additional charges of £30 + VAT per each 10 minutes of delays.
Additional works after the project handover – Any additional works after the project completion involving re-publishing of drawings, will incur an administrative charge of £50 + VAT per a set of the revised drawings in addition to the cost of producing the additional drawings.
Terms & Conditions - <https://measuredsurvey365.co.uk/downloads/docs/TermsandConditions.pdf>

Contact:
Tel: +44 (0) 203 538 8176
Tel: +44 (0) 739 901 1771

E-mail: hello@measuredsurveypro.co.uk
Website: measuredsurvey365.co.uk



Measured Survey
PRO

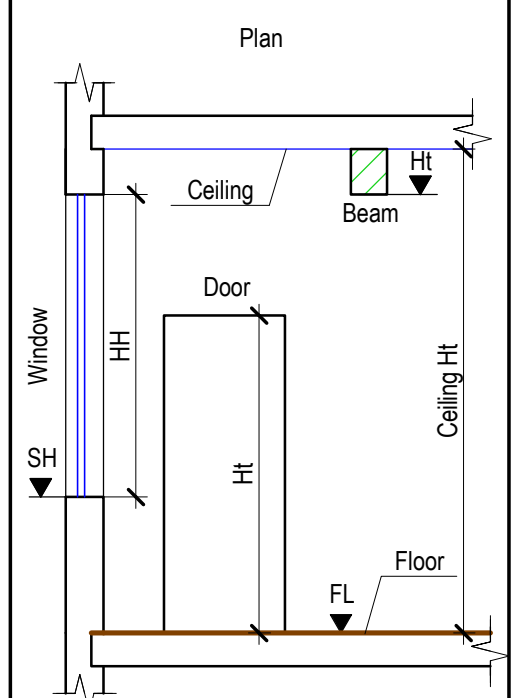
+44 (0) 203 538 8176

+44 (0) 739 901 1771

hello@measuredsurveypro.co.uk

https://measuredsurvey365.co.uk

Reference symbol



- Beam on plan view

- Fireplace

- Built-in storage

- Shower

- Ceiling hole, Ceiling level change

Elevation

- Roof

Section

- Ceiling

- Floor

Site plan

- Outline of a neighboring bld.

- Fence

- Landscaping

Abbreviations

FL - Floor Level

HT - Leaf Height (Door)

HT - Bottom Level (Beam)

SH - Window Sill Level

HH - Window Height

TL - Top Level

BL - Bottom Level

Section Number

1

3

Sheet Number

Notes

Project number

Project address

Description

Simplified Edition CAD Drawings Specification

Drawn

SK

Checked

CP

Scale bar

0

1

2

3

Scale

1:50

Format

A1

Sheet No

7